

Welcome

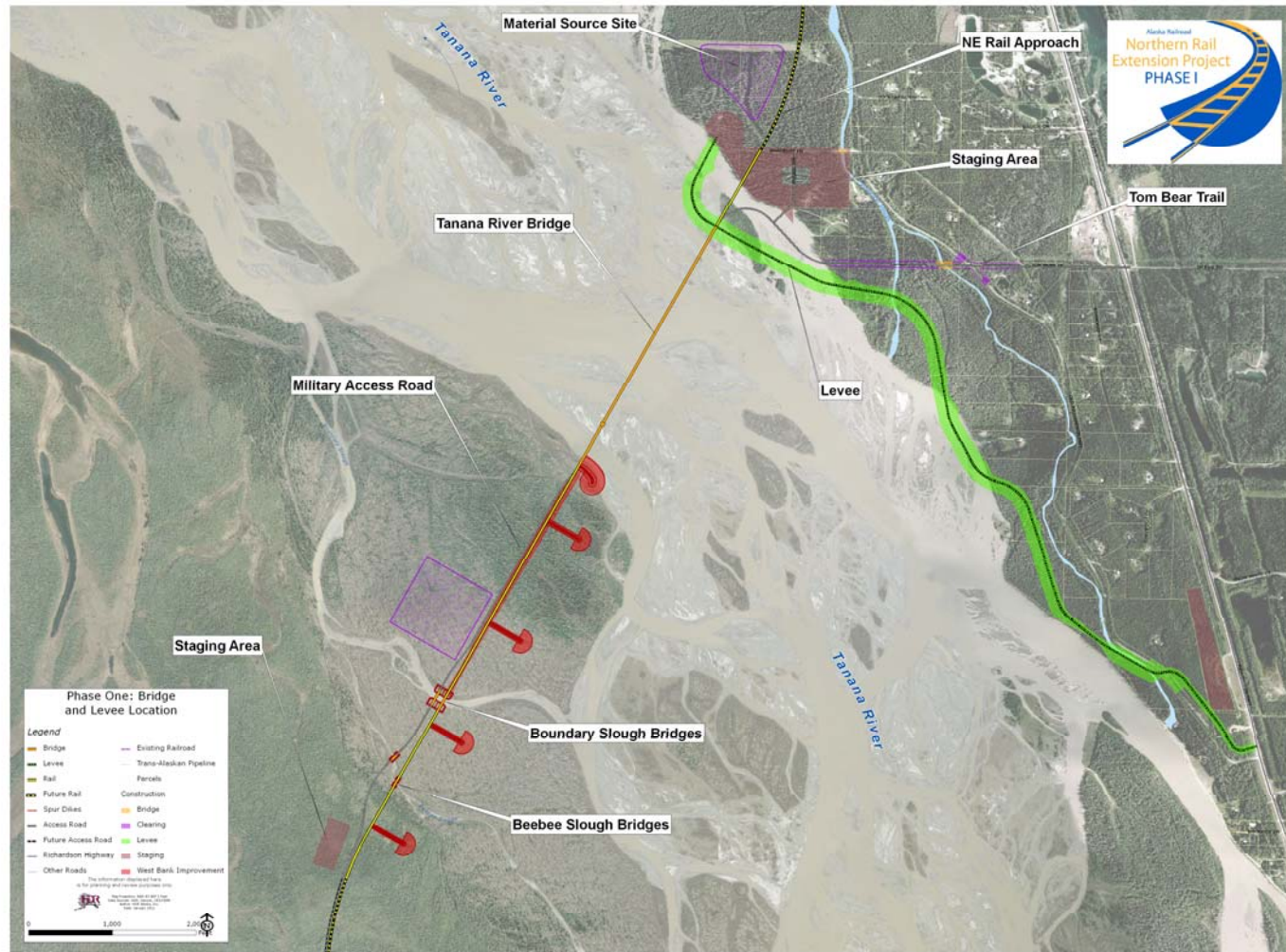
Northern Rail Extension Phase One Open House

Please take a moment to sign our attendance sheet



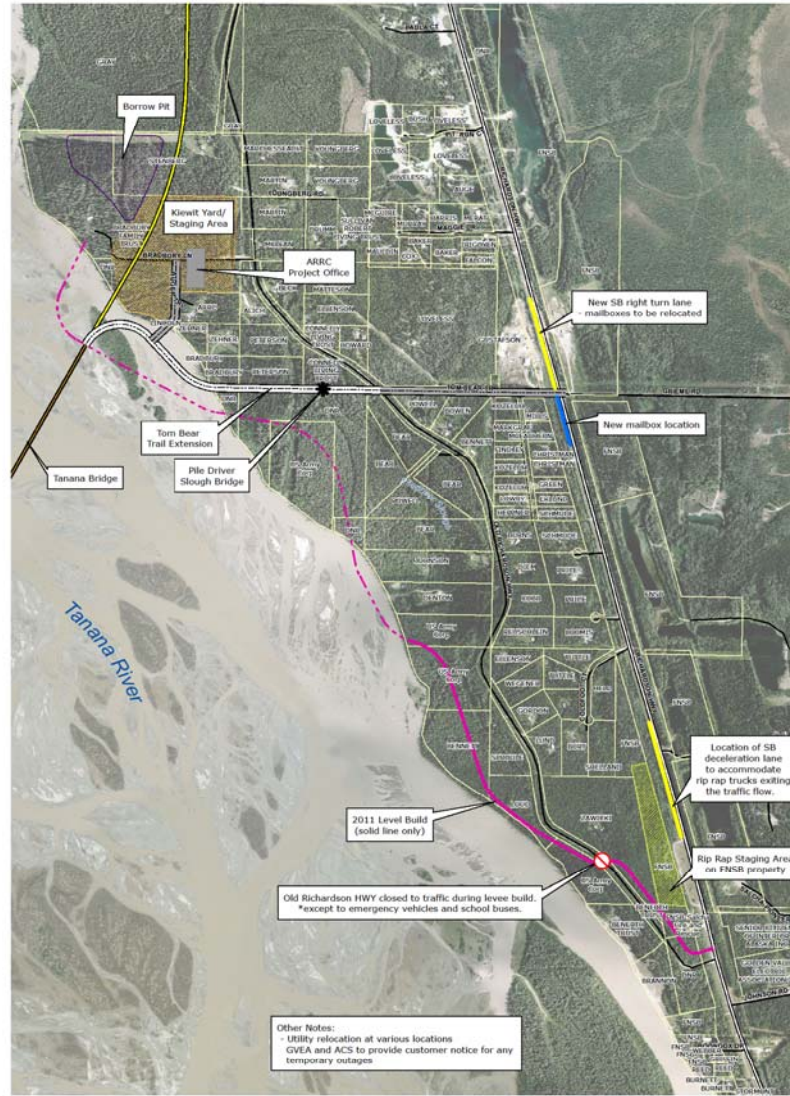
Northern Rail Extension

Bridge and Levee Location



Northern Rail Extension

Salcha Area Detail



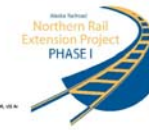
Legend

- 2011 Levee Build
- Levee
- Rip Rap Staging
- Rail
- Future Rail
- Access Road
- Parade *
- Richardson Highway
- Other Roads
- Bridge
- Material Source



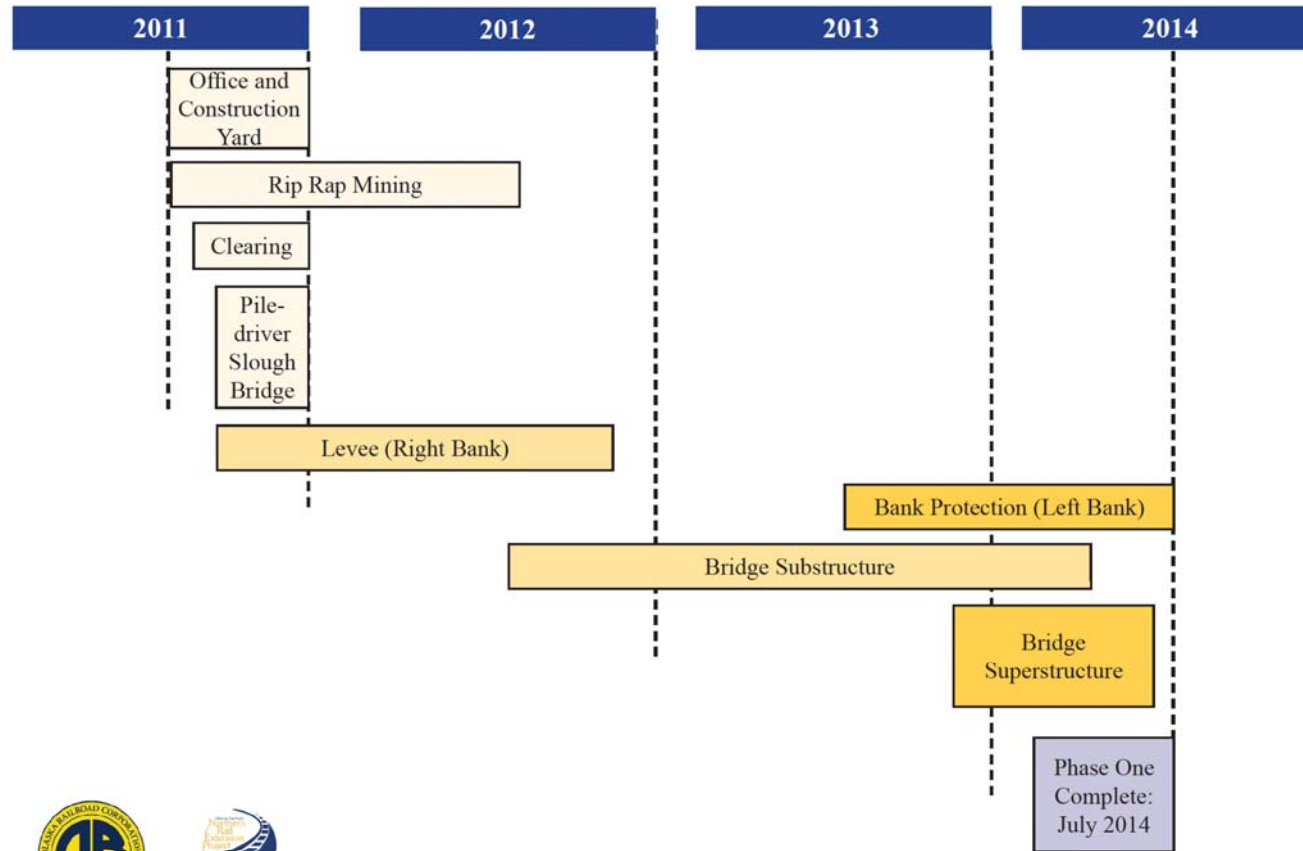
**Phase I
Levee Construction**

Alaska Railroad
Northern Rail
Extension Project
PHASE I



Northern Rail Extension

Schedule



Northern Rail Extension Phase One Anticipated Construction Timeline

What Can I Expect—Construction

- Land clearing will begin by late August 2011.
- Levee construction will begin near Salcha Fire and Rescue on or about September 6, 2011.
- On-site construction will occur 24 hours per day, six days per week through mid-October 2011.
- Tom Bear Trail road extension, west of the Old Richardson Highway, will begin fall 2011.
 - Includes new bridge construction at Piledriver Slough



What Can I Expect—Traffic

- Traffic along the Old Richardson and Richardson highways will increase.
- Levee work will occur along the Old Richardson Highway (various locations) through fall 2011.
- Rip-rap will be hauled to the project site from North Pole through summer 2012.
- A traffic control plan is being prepared and is in accordance with DOT&PF standards.



What Can I Expect—Noise

- Residents closest to the construction site will hear noise from logging and wood chipping during fall 2011.
- Residents will also hear noise from trucks and heavy equipment.
- Noise and vibration will increase during bridge construction and pile-driving—anticipated to begin in spring 2012.



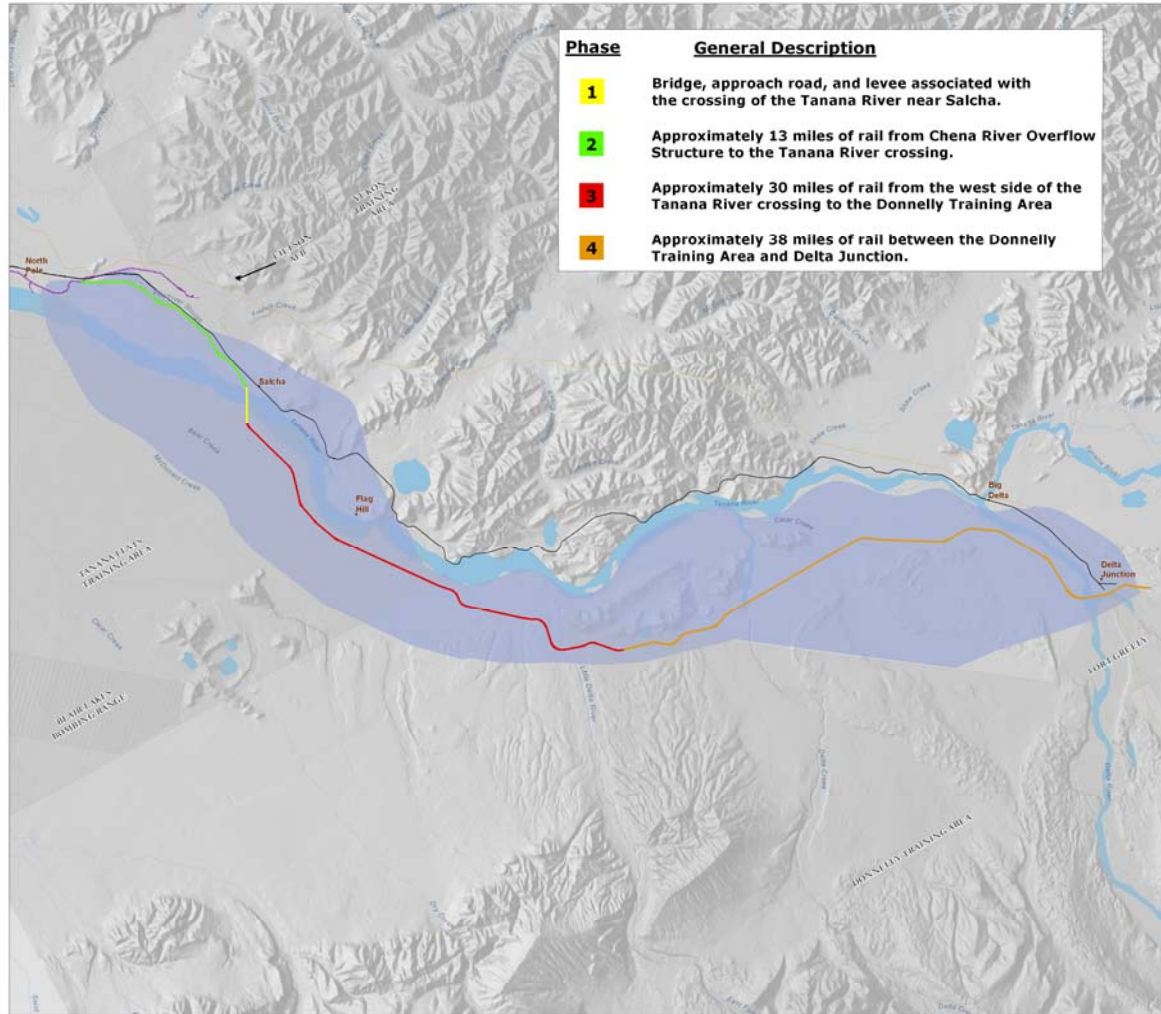
What Can I Expect—Site Access

- Construction areas are private property and are not accessible to the public for safety reasons.
- Security will be on-site 24 hours per day.
- If you require access to the site for any reason, please contact the site office.



Northern Rail Extension

Project Phases (funding dependent)



Phases One through Four

Legend

- Corridor Area
- Military Boundary
- Existing Railroad
- Trans-Alaskan Pipeline
- Richardson Highway
- Rivers and Streams



Map Projection: NAD 83 AlB 3 Feet
 Data Source: HGA, Hanson, CB/CORR
 Author: HGA/Hanson, Inc.
 Date: January 2011

The information displayed here is for planning and review purposes only.

Contact Us

- Visit our project website:
www.northernrailextension.com
- General ARRC questions
Stephenie Wheeler, Alaska Railroad Corporation
Corporate Communications Officer
public_comment@akrr.com
- Construction concerns
Mark Peterburs, Alaska Railroad Corporation
Project Director
Peterbursm@akrr.com
907-748-1767

A project office will be set up on site. Stay tuned to www.northernrailextension.com for contact information.

