



# Tanana River Crossing Northern Rail Extension Phase One

## PROJECT FACTS

### Project Scope & Description

The Alaska Railroad Corporation (ARRC) is constructing a crossing over the Tanana River in Salcha. The bridge construction marks the first phase of a four-phase project to extend rail infrastructure from Eielson AFB (near North Pole) 80 miles southeast to Delta Junction.

Phase One will construct one-lane vehicle access from the Richardson Highway to the Tanana River, and a crossing of the Tanana River to accommodate vehicles and provide the foundation for rail. A staging area for military use immediately south of the river is also included in the first phase.

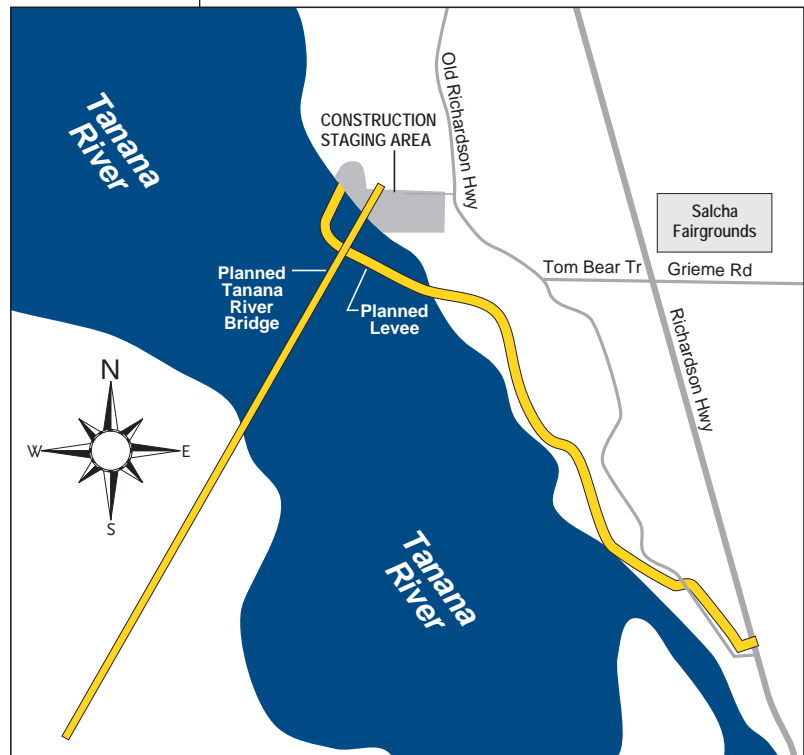
### Purpose and Need

The river crossing will initially provide the United States military with year-round vehicle access to vast military training areas on the southwest side of the river. Access to the Department of Defense (DOD) Joint Pacific Area Range Complex (JPARC) is currently limited to ice roads during winter. The Army and Air Force both use the million-acre complex, and their presence is expanding. JPARC provides unique opportunities for large scale, combined training of military units.

For later project phases, the crossing will allow new track infrastructure to traverse terrain that is more suitable for rail transportation. The final route was selected after considerable public involvement, environmental and socio-economic research, and preliminary engineering work associated with the Environmental Impact Statement / Study conducted by the Surface Transportation Board.

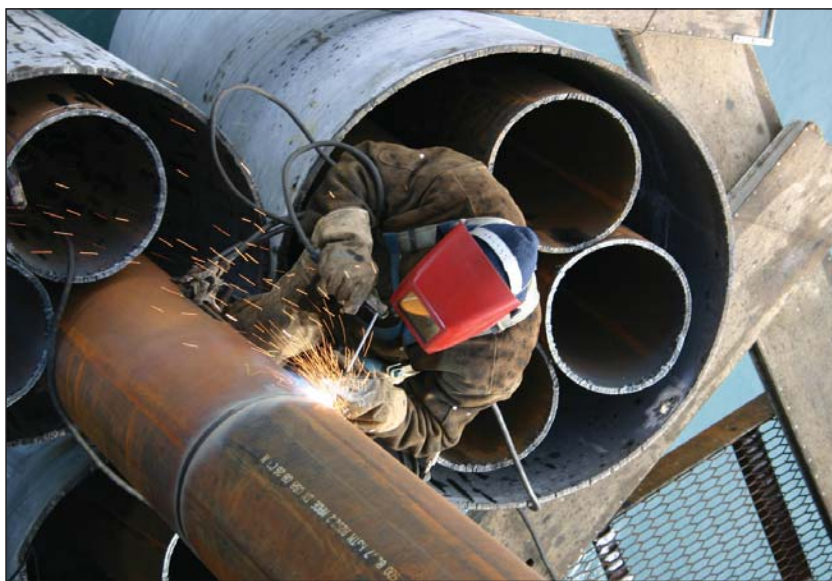
### Status/Timeline

- **January 5, 2010** — STB Record of Decision grants authority to construct and operate the rail extension.
- **July 2011** — ARRC signs a contract with Kiewit Infrastructure West Co. to serve as Construction Management - General Contractor for Phase One construction.
- **July 2011 - July 2012** — Rip-rap mining, hauling and placement.
- **August 2011** — Staging activities begin, to include establishing a construction yard and office on the east bank of the river.
- **August 23, 2011** — ARRC schedules Public Open House in Salcha to provide an update to residents nearby the construction area.

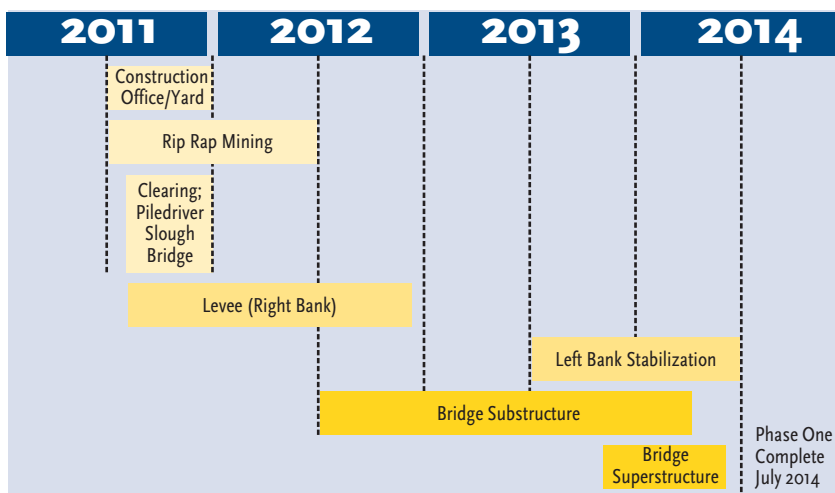


Phase One: Tanana River Crossing - Construction area map

- **September 28, 2011** — ARRC schedules Groundbreaking Ceremony at Construction Site in Salcha to commemorate the beginning of this historic project.
- **August - December 2011** — Land clearing and construction of temporary bridge over Piledriver Slough.
- **Early September 2011** — Construction of the Levee along the right bank begins near Salcha Fire & Rescue. Levee construction expected to be complete in fall 2012.
- **Fall 2011** — Extension and widening of Tom Bear Trail Road, west of the the Old Richardson Highway.
- **Spring 2012** — Bridge pile driving to begin, with bridge substructure work continuing through mid-2014.
- **July 2013** — Bank protection and stabilization work begins along the left bank, and continues through mid-2014.
- Generally, construction activities will occur 24 hours per day, six days per week May - October.
- Phase One construction scheduled for completion by July 2014.



## Phase One Construction Schedule



## Phase One Cost and Funding

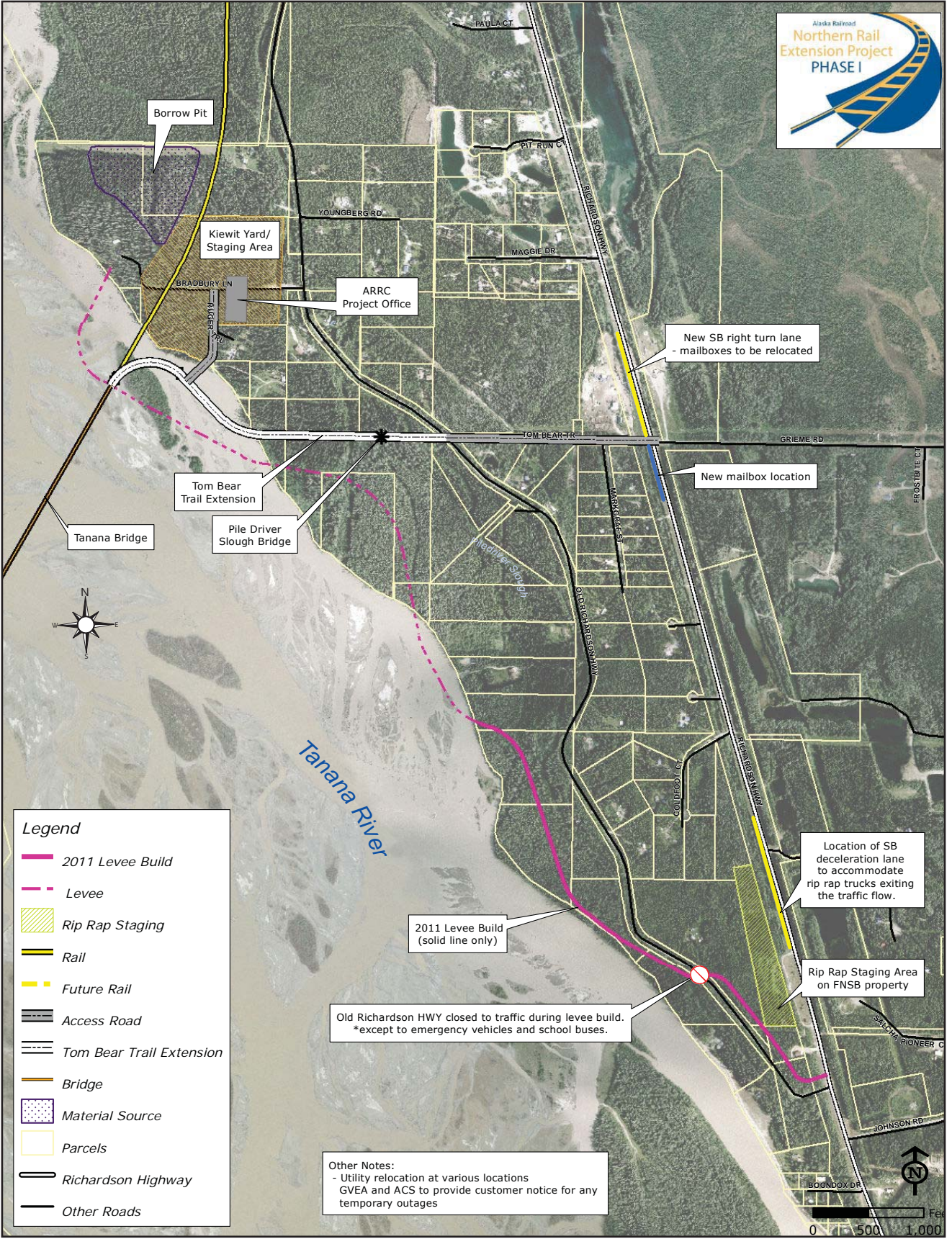
- DOD appropriated \$44.2 in 2007 and another \$60 million in 2008.
- State of Alaska appropriated \$40 million in 2010 and another \$44 million in 2011.
- \$188.2 million budget is being used for engineering, final design of the bridge and levee, permitting, land purchase, preparing the construction area, procuring materials and construction.

## For More Information

- visit [www.northernrailextension.com](http://www.northernrailextension.com)
- Email [public\\_comment@akrr.com](mailto:public_comment@akrr.com)

- For general railroad information, contact ARRC Corporate Communications Officer Stephenie Wheeler, (907) 265-2671, [WheelerS@akrr.com](mailto:WheelerS@akrr.com).
- Media can also contact ARRC External Affairs Manager Tim Sullivan, (907) 265-2357 or [SullivanT@akrr.com](mailto:SullivanT@akrr.com).
- For questions about Phase One construction, contact ARRC Project Director Mark Peterburs, (907) 748-1767 or [PeterbursM@akrr.com](mailto:PeterbursM@akrr.com).
- Potential construction vendors and sub-contractors should contact Owner's Representative to Kiewit, Sim Brubaker, (907) 328-2233 or [Sim.Brubaker@hdrinc.com](mailto:Sim.Brubaker@hdrinc.com).

# Detailed Construction Site Map



**Legend**

- 2011 Levee Build
- - - Levee
- Rip Rap Staging
- Rail
- Future Rail
- Access Road
- Tom Bear Trail Extension
- Bridge
- Material Source
- Parcels
- Richardson Highway
- Other Roads

Old Richardson HWY closed to traffic during levee build.  
\*except to emergency vehicles and school buses.

**Other Notes:**  
- Utility relocation at various locations  
- GVEA and ACS to provide customer notice for any temporary outages