
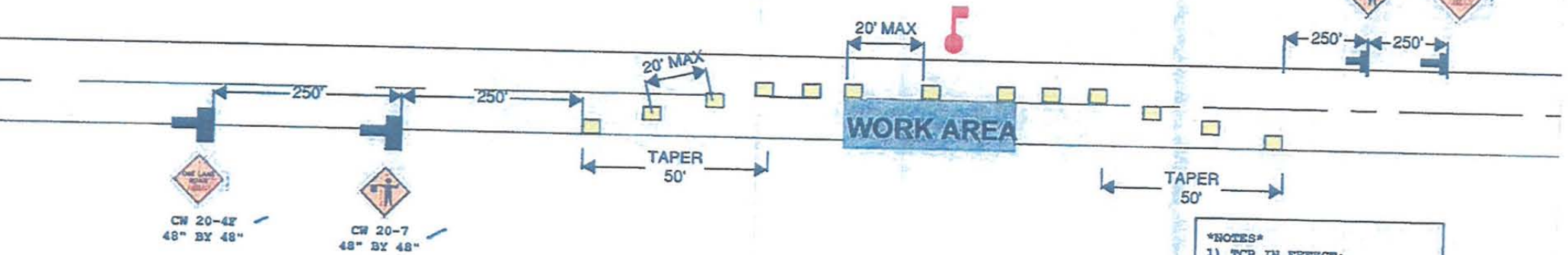


TRAFFIC CONTROL PLAN  
#5

 =FLAGGER STATION

 =CHANNELIZING DEVICE

OLD RICHMOND HIGHWAY



CW 20-7 48" BY 48"  
CW 20-4F 48" BY 48"

CW 20-4F 48" BY 48"  
CW 20-7 48" BY 48"

I CERTIFY THIS TCP IS IN CONFORMANCE WITH THE ATM & SPECIFICATIONS

*John Brauchle*  
WORKSITE TRAFFIC SUPERVISOR  
*John Brauchle*  
SUPERINTENDANT

- \*NOTES\*
- 1) TCP IN EFFECT:  
AUGUST-NOVEMBER 2011  
APRIL-NOVEMBER 2012  
APRIL-NOVEMBER 2013  
APRIL-SEPTEMBER 2014
  - 2) SIGNS ARE MOUNTED 1' MIN. ABOVE TRAVELLED WAY
  - 3) IF TCP IS USED FOR MORE THAN 3 CONSEC. DAYS; SIGNS WILL BE POST MOUNTED MIN. 5' ABOVE TRAVELLED WAY
  - 4) FLAGGER STATION SHALL BE ILLUMINATED FOR NIGHT WORK
  - 5) HIGH LEVEL WARNING DEVICES ATOP ALL SIGNS
  - 6) POSTED SPEED ON OLD RICH. HWY IS 30 MPH

CONTACTS:  
ROBERT RAMER (360) 607 6798  
JOHN BRAUCHE (907) 360 1299

Approved as Noted  
Northern Region 09.08.11  
Traffic Section *cmachin*

NOT TO SCALE

P # 22305

V2

